



LITE WORK DESIGNS

Safer, Easier, More Professional

*Tools for the
#SOLO Installer*

"Making heavy, lite"

About Us.

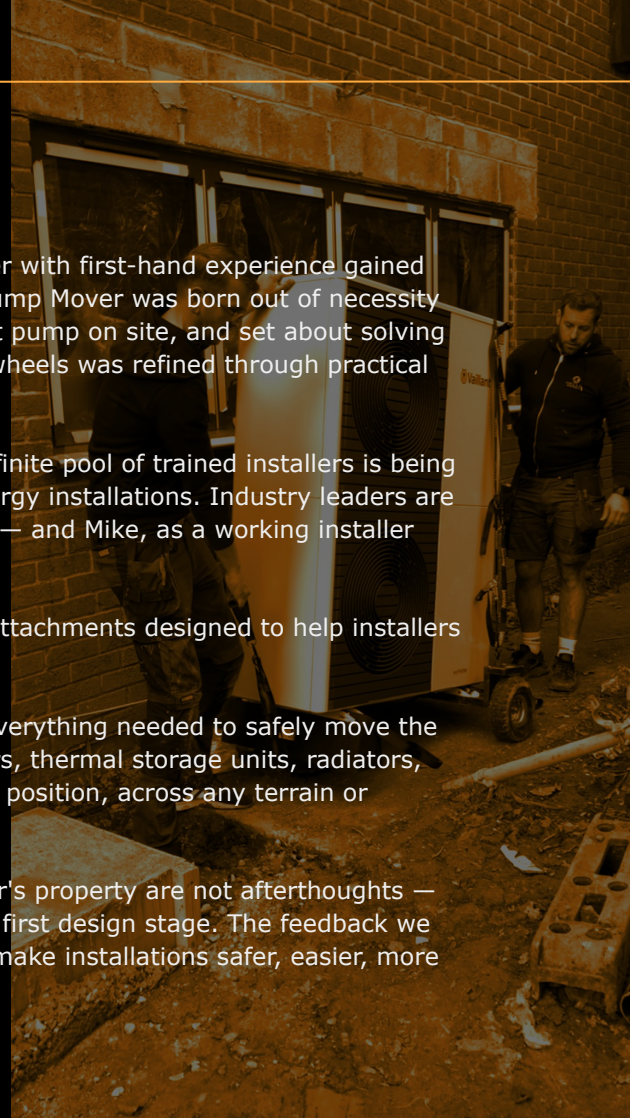
Our Founder and Managing Director, Mike, is a practising installer with first-hand experience gained across hundreds of heat pump installations. The original Heat Pump Mover was born out of necessity — Mike suffered a back injury in 2020 while manoeuvring a heat pump on site, and set about solving the problem. What began as a simple piece of 4"x2" timber on wheels was refined through practical engineering into the innovative product it is today.

The **SOLO Installer** concept grew from a recognised reality: a finite pool of trained installers is being asked to meet rapidly growing global demand for renewable energy installations. Industry leaders are calling for safer working practices and greater on-site efficiency — and Mike, as a working installer himself, answered that call.

In response, he developed a suite of complementary tools and attachments designed to help installers work more safely, more efficiently, and more professionally.

Our mission is simple: to equip and enable solo installers with everything needed to safely move the heaviest domestic heat pumps, PV batteries, oil tanks and boilers, thermal storage units, radiators, cylinders and more — from kerbside drop-off to final installation position, across any terrain or environment.

Installer safety, equipment protection, and care for the customer's property are not afterthoughts — they are engineered into every product we make, from the very first design stage. The feedback we consistently receive from customers speaks for itself: our tools make installations safer, easier, more efficient, and more professional.



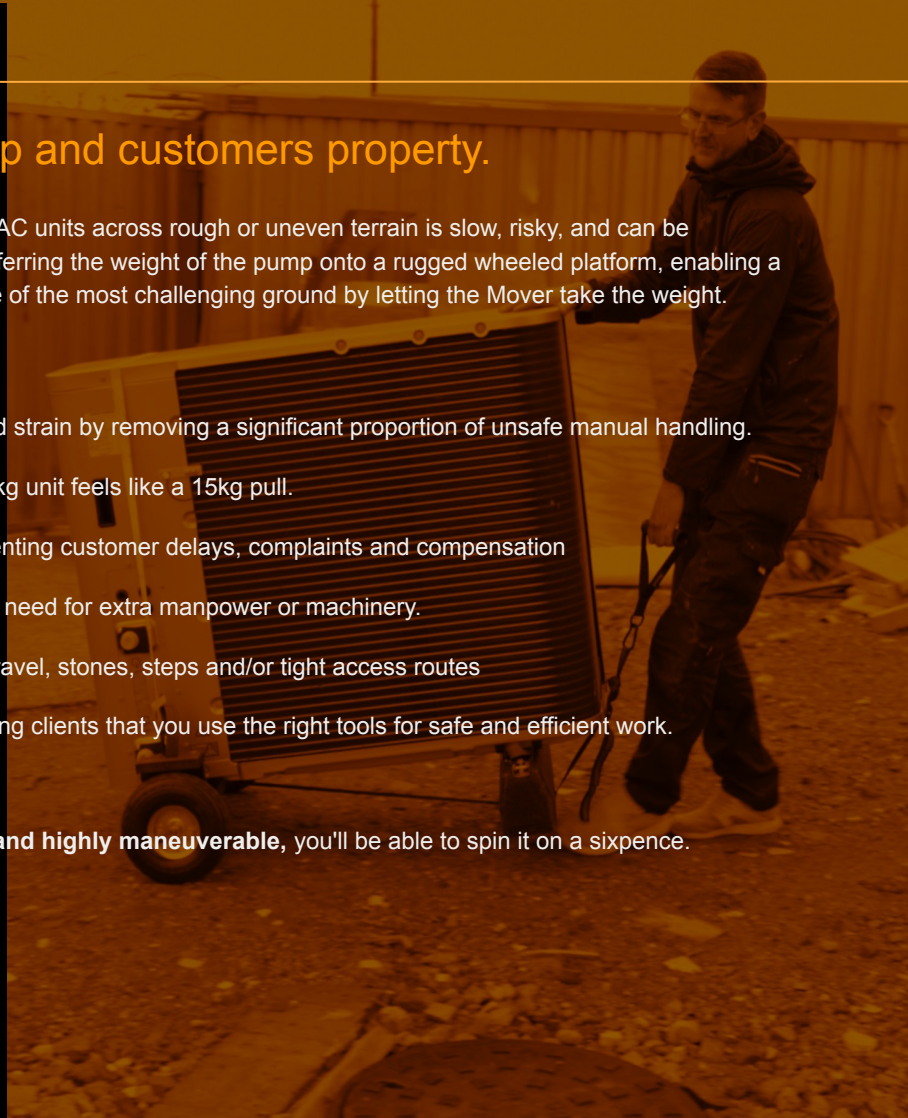
Protect your back, the pump and customers property.

We all know, moving heavy heat pumps and HVAC units across rough or uneven terrain is slow, risky, and can be labour-intensive. Our Movers solve this by transferring the weight of the pump onto a rugged wheeled platform, enabling a single installer to move units safely across some of the most challenging ground by letting the Mover take the weight.

By doing the heavy lifting, the Mover:

- ✔ **Protects you and your team** from injury and strain by removing a significant proportion of unsafe manual handling.
- ✔ **Reduces your effort by up to 80%**, a 150 kg unit feels like a 15kg pull.
- ✔ **Reduce the risk of pump damage** by preventing customer delays, complaints and compensation
- ✔ **Enables solo installations** by removing the need for extra manpower or machinery.
- ✔ **Handles any site terrain** containing mud, gravel, stones, steps and/or tight access routes
- ✔ **Delivers a professional impression**, showing clients that you use the right tools for safe and efficient work.

Your LOAD will become significantly lighter and highly maneuverable, you'll be able to spin it on a sixpence.



Our Mover Family

Our patented Movers are crafted from 100% recycled household plastic with a solid steel axle, allowing them to support loads of up to 400 kg. They are designed for immediate use out-of-the-box, supplied with securing straps, an adjustable pull strap, and handles to help comply with manual handling regulations.

We offer a range of Movers tailored to various needs:

MICRO: Ideal for moving PV Batteries, K3 Radiators, RSJs, window frames, wood panels and other heavy items.

MINI: Specifically designed to pass through internal property doorways. Suitable for PV or Thermal storage batteries, smaller heat pumps or HVAC equipment.

HEAT PUMP MOVER: Our original Heat Pump Mover is capable of handling most domestic heat pumps currently being installed.

MAXI: Engineered to move larger domestic heat pumps or oil tanks, whether boxed or unboxed.



Patent GB2631000

Accessories

Our accessories are designed to seamlessly integrate with any Mover, offering enhanced assistance for various installation needs. Here's a brief overview of their specific function:

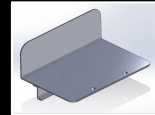
LIFTERS: Facilitate the lifting and lowering of heavy units on and off the Mover.

ROLLER: Enables the smooth transfer of thermal storage units from a pallet directly onto the Mover.

STAY: Secures loads, preventing unwanted movement when navigating stairs or steep slopes.

FRAME: Used in conjunction with our LIFTERS, the FRAME helps lift a pump off its pallet for easy removal of packaging and onto the Mover

RAMPS: Designed for safely moving pumps up/down steps, or over gullies, ditches or in/out of your van..



All Terrain

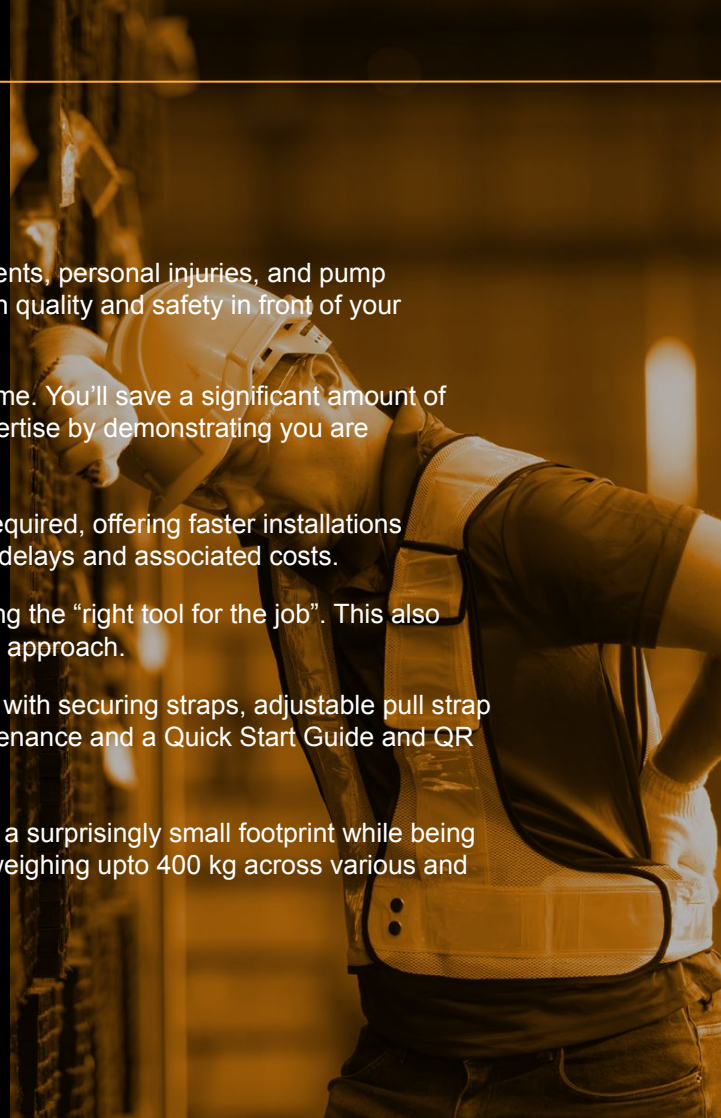
Our Movers are designed to handle the challenging conditions often found on building sites. Movers are engineered to effectively transport heavy equipment, whether boxed or unboxed, across various terrains including gravel, mud, grass, and debris.



The Movers robust design allows them to safely navigate small steps, tight alleyways, overcome objects, and manage both inclines and declines, ensuring a safe and reliable solution for your installation. We believe these capabilities can significantly improve the efficiency and safety of moving loads for all installers.

Immediate Benefits of using a Mover

- ✔ **100% Safer:** Significantly lowers the chance of accidents, personal injuries, and pump damage. You'll demonstrate a strong commitment to both quality and safety in front of your customers.
- ✔ **400% Easier:** Save your energy for when you get home. You'll save a significant amount of physical energy and showcase your confidence and expertise by demonstrating you are well-prepared and ready for the task in hand.
- ✔ **More Efficient:** Movers 'enable' solo installations if required, offering faster installations through multi tasking teams, helping avoid unnecessary delays and associated costs.
- ✔ **More Professional:** Enhances your credibility by using the "right tool for the job". This also presents you as being prepared and professional in your approach.
- ✔ **Ready to go:** Out of the box, all Movers are supplied with securing straps, adjustable pull strap (for H&S), two grab handles, allen key for monthly maintenance and a Quick Start Guide and QR Code for the full Operators Manual and training videos
- ✔ **Minimal Van Space:** Size matters, our Movers offers a surprisingly small footprint while being more than capable of moving large cumbersome loads weighing upto 400 kg across various and difficult terrains, including mud and grass.



Heat Pump Mover

We all know moving heat pumps is dangerous, you can easily twist an ankle, damage your back or the pump leading to added cost, delays or time off work. As a professional installer you need to protect yourself from **long-term manual handling injuries**.

The Heat Pump Mover is designed to remove the load from your back to the MOVER. The Mover becomes an extension of the pump: you secure the pump with the straps provided, and off you go, pushing or pulling the pump across any terrain with significantly less risk and effort than lifting.

Immediate benefits

- ✔ Safer installations
- ✔ Highly maneuverable and easy to use
- ✔ Provides installation efficiencies
- ✔ Demonstrates professional credential / credibility
- ✔ Very compact and versatile with a small footprint.

Max Load	400 kg
Max Load Width	620 mm
Box (mm)	905(l), 298(h), 265(d)
Weight	9.9 kg
Materials	100% Recycled Plastic & Steel Axle
Tyres	Pneumatic (30psi)
Warranty	Lifetime (x wheels and tyres)
HS Code	87168000: Other vehicles, not mechanically propelled,



MINI Mover

Working in terraced houses or where access to the rear of the property is not possible, is challenging especially if you need to move units from curbside to rear of the property.

The MINI Mover is designed to work inside your customer's property, making installing heavy HVAC units, PV and thermal batteries faster, safer, and more professional. Its slim, balanced design moves easily through doorways and tight spaces. With a 400 kg capacity, it handles the heavy lifting so you don't have to.

✔ Built for moving units through internal doors. Compact width, low profile, and excellent balance make it ideal for use inside customer properties.

✔ Effortless Handling – Precision-engineered frame and secure straps give total control, even with awkward loads.

✔ Fast, Safe, Professional – Cut installation time, reduce manual handling risk, and impress every client.

Max Load	400 kg
Max Load Width	470 mm
Box (mm)	712(l), 298(h), 265(d)
Max Door Width	710mm (28")
Weight	7 kg
Materials	100% Recycled Plastic & Steel Axle
Tyres	Pneumatic (30psi)
Warranty	Lifetime (x wheels and tyres)



IMAGES



MICRO Mover

If you're a builder, plumber or just need to move heavy "stuff", the MICRO Mover is designed for you. It's compact and highly maneuverable with any load up to 400kg.

The MICRO Mover has the same operational benefits as the Heat Pump Mover but is more compact. Specifically designed to help builders, plumbers and installers move smaller, heavy items through internal doors or across your typical building site.

To Move -

- K3 Radiators
- PV Batteries
- RSJs
- Window Frames

Immediate Benefits::

- ✓ Moves through internal doors.
- ✓ Highly maneuverable and easy to use
- ✓ Enables safer installations
- ✓ Very compact and versatile with a small footprint.

Max Load	400 kg
Max Load Width	320 mm
Max Width (inc Tyres)	602 mm
Box (mm)	604(l), 298(h), 265(d)
Weight	6 kg
Materials	100% Recycled Plastic & Steel Axle
Tyres	Pneumatic (30psi)
Warranty	Lifetime (x wheels and tyres)



VIDEO



MAXI Mover

Rural properties are often 'off the beaten track' with limited curbside access especially if you are installing heat pumps, renewing oil boilers or tanks.

The largest Mover in our family is specifically designed to move large, heavy domestic units over rough terrain, some often requiring long distances from curbside drop off.

MAXI Mover has the same operational benefits as the Heat Pump Mover, but wider.

Immediate Benefits:

- ✔ For loads upto 820mm wide weighing 400kg
- ✔ Highly maneuverable and easy to use
- ✔ Enables safer installations in rural settings
- ✔ Robust and versatile
- ✔ High capability for its size - van friendly



Max Load	400 kg
Max Load Width	820 mm
Box (mm)	1103(l), 298(h), 265(d)
Weight	10 kg
Materials	Recycled Plastic & Steel Axle
Tyres	Pneumatic (30 psi)
Warranty	Lifetime (x wheels and tyres)

VIDEO



ROLLER

Thermal storage units are heavy, tall and nothing to grip on to, just like water cylinders, large water tanks or PV batteries. This form factor makes them extremely challenging to handle or balance safely on standard lifting equipment. Their relatively high centre of gravity increases the risk of tipping if not handled with care.

The ROLLER is an attachment for any Mover, designed to roll the load off a pallet onto the Mover. Use the Mover to move the load to its final location, collapse the front foot and roll the unit into position.

Immediate Benefits:

- ✔ Effortless Load Placement
- ✔ Reduced Risk of Back Injury
- ✔ Faster Installation Times
- ✔ Single-Person Operation
- ✔ Improved Installer Wellbeing & Reduced Liability

Max Load	400 kg
Max Load Width	465 mm
Dimensions	(L) 590mm x (W) 260mm
Box (mm)	710(l), 298(h), 265(d)
Weight	4.6 kg
Materials	Aluminum plate with steel rollers.



FRAME

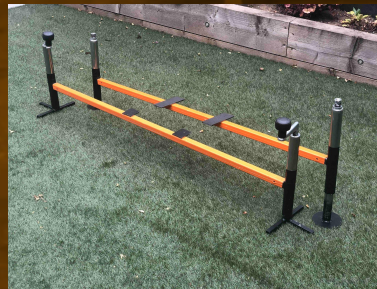
One of the hardest stages of receiving and moving a heat pump is to get it off the pallet and unpack all the protective packing.

Our FRAME, supplied with a pair of LIFTERS is specifically designed to safely raise and lower any size pump off a pallet and onto a MOVER. Once the pump is secured, you're good to go.

Key Benefits:

- ✔ SOLO Installer Enabled
- ✔ Eliminates the need for additional resources
- ✔ Seamless transition from pallet to MOVER
- ✔ Protects the heat pump from damage
- ✔ Clean and safer unpacking process.

Max Load	400 kg
Max Load Width	Variable
Weight	5.8 kg
Measurements	(L) 590mm x (W) 260mm
Box (mm)	TBA
Materials	Steel crossbars and moulded plastic feet.
Warranty	Lifetime (x rubber pads)



LIFTERS

Without proper lifting equipment, installers often resort to manually lifting to move heavy units into position. This practice not only creates a significant safety risk but also leads to difficult alignment and job inefficiencies.

Our LIFTERS are specifically designed for precise lifting, lowering, leveling, or holding of heavy or awkward loads, including heat pumps, RSJs, K3 Radiators, thermal storage units and more.

Engineered with safety in mind, the slow-drop lever allows you to lower your load by 2mm at a time, ensuring accuracy when positioning it onto the Mover or into position.

Key Benefits:

- ✓ **SOLO Installer Enabled**
- ✓ **Reduces Physical Strain During Lowering**
- ✓ **2mm Drop Feature**
- ✓ **Safer Load Lowering**
- ✓ **Increases Installer Confidence & Professionalism**

Max Load	150 kg
Lift Height	2 mm to 220 mm
Box (mm)	710(l), 298(h), 265(d)
Weight	2.5kg
Materials	Case Aluminum & Steel
Warranty	3 years



STAY

Moving loads with flat surfaces like oil boilers or PV batteries up or down stairs or steep slopes can cause the load to slip on the Mover if not securely strapped into place.

The STAY is an attachment for any of our Movers - it bolts to the Move baseboard and provides a backstop to support the load during a move.

Key Benefits:

- ✔ Supports flat surface loads
- ✔ Designed for steep inclines or declines.
- ✔ Fits all Movers
- ✔ Quick and easy to fit.
- ✔ Turns a MOVER into a temporary sack-barrow

Max Load	400 kg
Max Load Width	Defined by MOVER type
Weight	2.5kg
Dimensions	(W) 300mm x (H) 188mm
Materials	3mm steel plate, powder coated for longevity
Warranty	Lifetime



RAMPS

We understand that moving heavy and cumbersome equipment, such as heat pumps, or navigating challenges like garden steps, gullies or drain trenches can be difficult.

Our Telescopic RAMPS are designed to help you overcome these obstacles. They expand from 1m to 2.2m, making it easier to load and unload heavy equipment from your van and to navigate various site challenges.

For safety, especially when moving items that could "run away," we recommend using two operators: one to steer the Mover and another to hold it back.

Immediate Benefits:

- ✔ Extendable from 1m to 2.4m
- ✔ Supplier with carry case
- ✔ Facilitates loading and unloading heavy equipment to / from your van
- ✔ Helps overcome typical garden or building site challenges

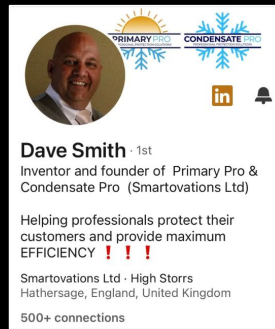
Max Load	200 kg
Max Height	800mm
Adjustable Length	1m to 2.4m
Weight	9 kg
Box (mm)	710(l), 298(h), 265(d)
Materials	Aluminum
Warranty	Lifetime



What Do The Experts Think?



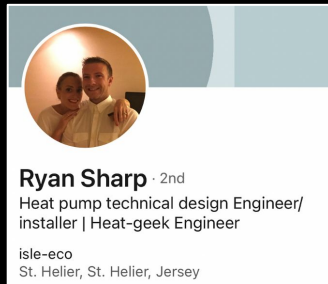
“spine saver”



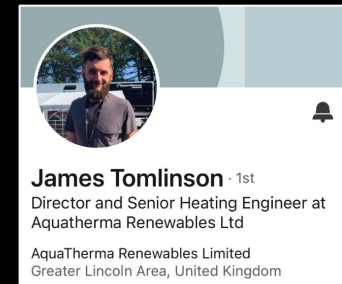
“no brainer for all heat pump pro installers and companies”



“product of the year”



“makes the job a lot easier”



“makes my installs so much easier”

Contact Us

Lite Work Designs Ltd.
Unit 2
Dares Farm Business Park
Farnham Road
Farnham, Surrey
GU10 5BB

Office: +44 (0)1252 926487
Email: sales@liteworkdesigns.co.uk

Website: <https://www.liteworkdesigns.co.uk>



#heatpumpmover
#liteworkdesigns

